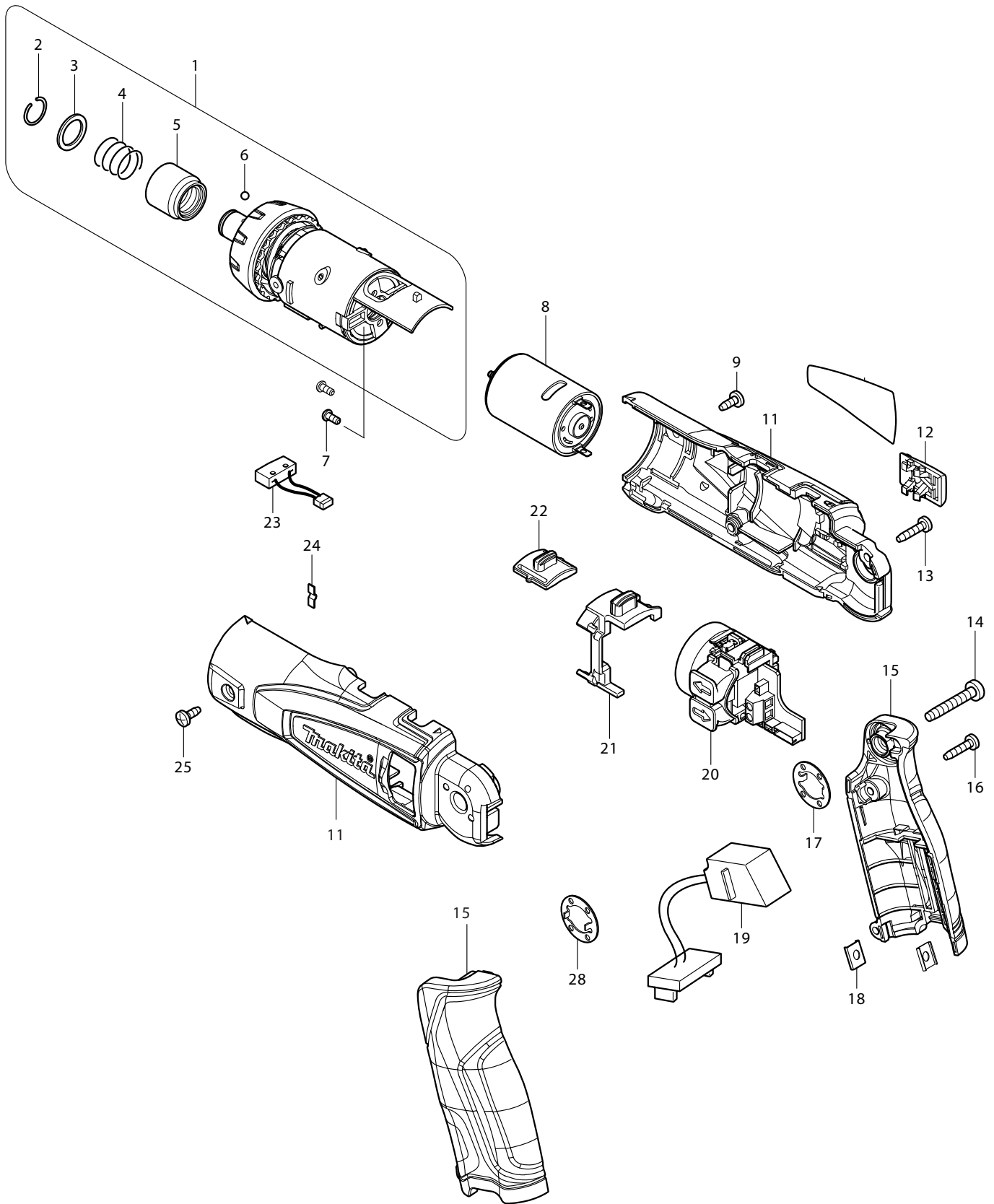




04 - 2008
DF010DSE
7.2V SCREWDRIVER KIT



Item No.	Type	Sub	Part No.	Description	Qty	Unit
1			125464-8	GEAR ASSEMBLY	1	PC.
		INC.		Item No. 2-6		
2			231965-7	RING SPRING 10	1	PC.
3			267143-3	FLAT WASHER 11	1	PC.
4			233005-7	COMPRESSION SPRING 13	1	PC.
5			324919-2	BIT SLEEVE	1	PC.
6			216019-1	STEEL BALL 3	2	PC.
7			265172-0	+PAN HEAD SCREW M2.6X6	2	PC.
8			629854-2	DC MOTOR	1	PC.
9			265954-0	TAPPING SCREW BIND PT3X8	1	PC.
11			188508-5	MOTOR HOUSING SET	1	SET
12			450590-7	SLIDE PLATE	1	PC.
13			266404-8	TAPPING SCREW BIND 3X14	3	PC.
14			266374-1	TAPPING SCREW 4X25	1	PC.
15			188509-3	HANDLE SET	1	SET
16			266404-8	TAPPING SCREW BIND 3X14	2	PC.
17			267803-7	LOCK WASHER	1	PC.
18			345749-8	SET PLATE	2	PC.
19			631811-8	CONTROLLER	1	PC.
20			638605-2	SWITCH UNIT	1	PC.
21			450553-3	CHANGE LEVER	1	PC.
22			125465-6	SPEED CHANGE LEVER ASSEMBLY	1	PC.
		INC.	233018-8	COMPRESSION SPRING 3	2	PC.
23			638609-4	SWITCH UNIT	1	PC.
24			232242-0	LEAF SPRING	1	PC.
25			265954-0	TAPPING SCREW BIND PT3X8	1	PC.
28			267803-7	LOCK WASHER	1	PC.
<u>ACCESSORIES</u>				- See Catalogue or visit www.makita.ca for more accessories information -		
A01		1	DC07SA	CHARGER DC07SA	1	PC.
		2	DC10WB	CHARGER DC10WB	1	PC.
A02			194356-2	7.2V LI-ION BATTERY, BL7010	1	PC.
A03			784244-7	+ BIT 2-50	1	PC.
A04			784245-5	+ BIT 1-50	1	PC.
A05			824781-0	PLASTIC CASE F/ BATTERY AND SMALL ACCESSORIES	1	PC.
A06			158775-6	PLASTIC CARRYING CASE COMPLETE	1	PC.
		INC.	417724-5	LATCH	2	PC.
A08			168435-2	HOLSTER	1	PC.
A09			194250-8	3/8" KEYLESS DRILL CHUCK ATTACHMENT	1	PC.